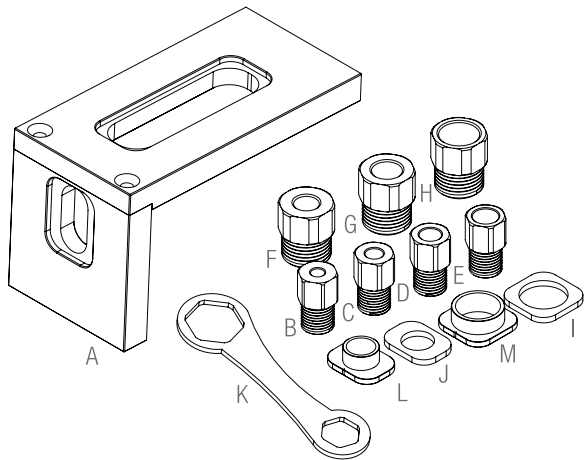


Woodpeckers®

DELUXE UNIVERSAL CROSS DOWEL JIG

O W N E R ' S M A N U A L

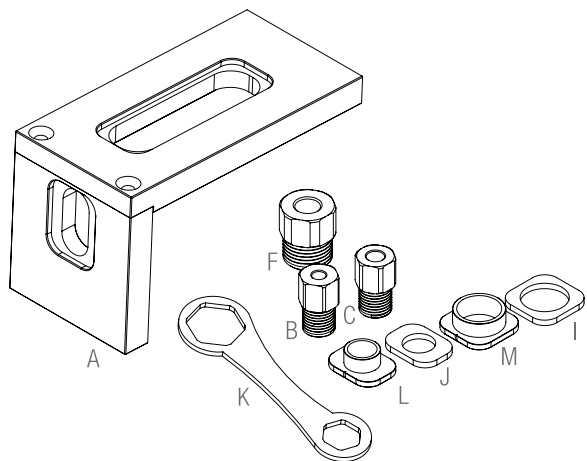
- A. Universal Cross Dowel Jig Body
- B. 7/32 Bushing
- C. 9/32 Bushing
- D. 11/32 Bushing
- E. 13/32 Bushing
- F. 10mm Bushing
- G. 12mm Bushing
- H. 16mm Bushing
- I. Large Washer
- J. Small Washer
- K. Wrench
- L. 1/2-20 T-Nut
- M. 3/4-20 T-Nut



UNIVERSAL CROSS DOWEL JIG - BASIC KIT

O W N E R ' S M A N U A L

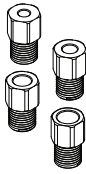
- A. Universal Cross Dowel Jig Body
- B. 7/32 Bushing
- C. 9/32 Bushing
- F. 10mm Bushing
- I. Large Washer
- J. Small Washer
- K. Wrench
- L. 1/2-20 T-Nut
- M. 3/4-20 T-Nut



If you think you're missing anything, email us at mailroom@woodpeck.com.
You can also call us at 800-752-0725 from 9:00 a.m. to 5:00 p.m. EST Monday - Friday.

SELECTING THE RIGHT BUSHING

Below is a chart for selecting the correct drill & bushing for the dowel of your choice.



7/32 Bushing / 10-24 Connector Bolt

9/32 Bushing / 1/4-20 Connector Bolt

11/32 Bushing / 5/16-18 Connector Bolt

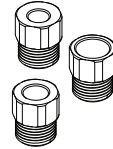
13/32 Bushing / 3/8-16 Connector Bolt

CROSS DOWEL DRILLS

10mm Bushing Drill / 10-24 & 1/4-20 Cross Dowel

12mm Bushing Drill / 5/16-18 Cross Dowel

16mm (5/8) Bushing Drill / 3/8-16 Cross Dowel



ASSEMBLING THE UNIVERSAL CROSS DOWEL JIG

1. After you have selected the correct Bushings for your bolt/dowel, the next step is assembling the Universal Cross Dowel Jig (UCDJ). *Figure A.*

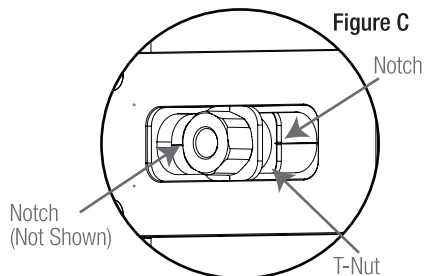
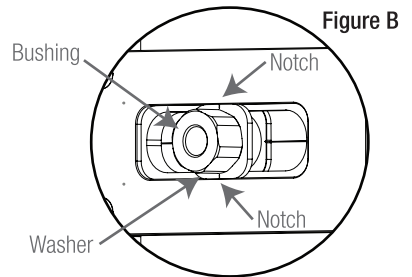
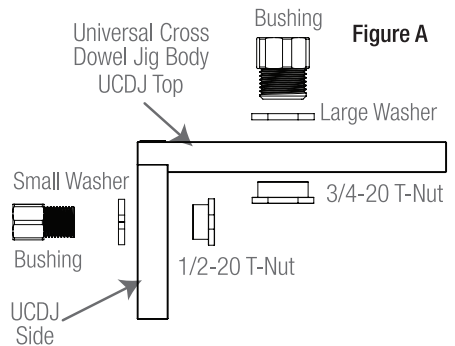
2. Assemble the UCDJ Top by placing the Large Washer into the top of the slot on the UCDJ Body. Align the notches on the Large Washer with the scale engraving on the UCDJ Body.

Figure B.

3. From under the UCDJ Body place the 3/4-20 T-Nut into the slot and align the Large Washer. Notches on the 3/4-20 T-Nut perpendicular to the scale engraving on the UCDJ Body. This is for use in centering your UCDJ to your measurement. (NOTE The notches on the Washer will be opposite of the notches on the T-Nut.) *Figure C.*

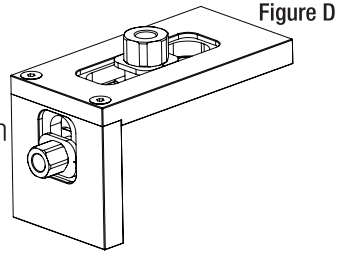
4. Thread the Bushing in through the Washer and T-Nut. Twist clockwise until loosely tightened so that the bushing can slide to choose your measurement.

5. To assemble the UCDJ Side follow steps 2-4 using the Small Washer and the 1/2-20 T-Nut.

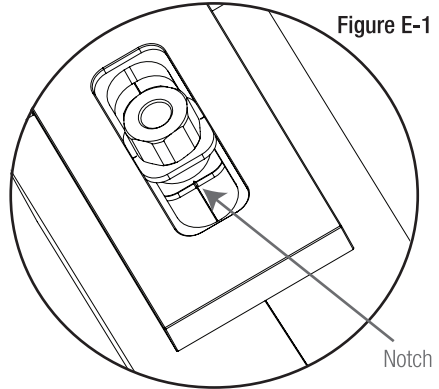


SETTING YOUR DRILL LOCATION (UCDJ NOTCH ALIGNMENT)

6. Align the notch on the Washers with the engraved scale English/metric on the UCDJ Body to the dimension you wish to drill. Do this to both the Top and the Side of the UCDJ. *Figure D.*

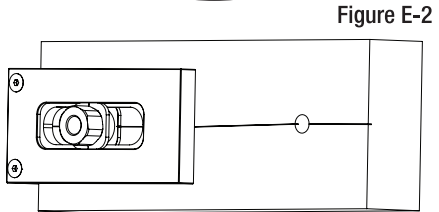


7. Tighten the Bushings once the desired measurements are chosen. Use the provided Wrench to aid in tightening the Bushings twist clockwise until tight.

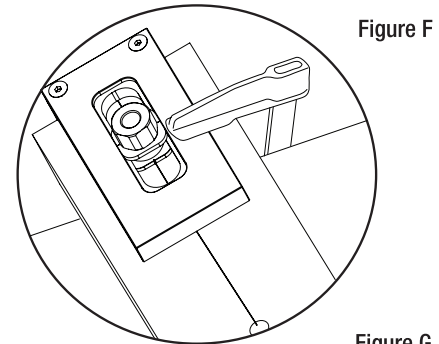


DRILLING HOLES

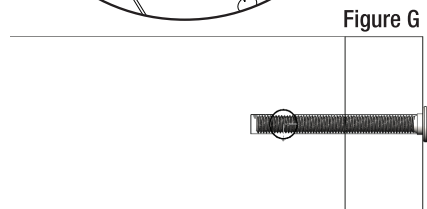
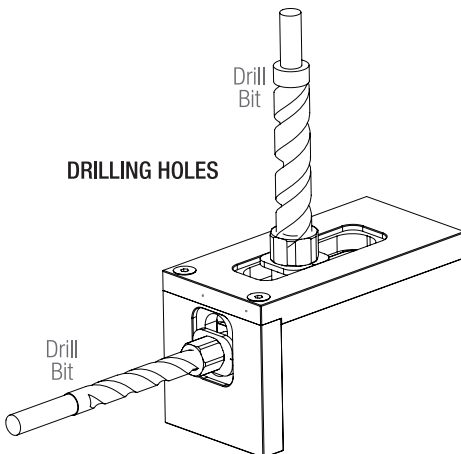
8. After the measurement locations have been set, align the Large T-Nut notch with your measurement line on your workpiece. *Figure E-1 & E-2.*



9. Add a clamp to the UCDJ to secure it to workpiece. *Figure F.* NOTE: If using the UCDJ for a blind hole it is recommended to use a drill stop to ensure drilling to correct depth.



10. When drilling holes, it is important to drill the connector bolt hole past the hole for the dowel. This will ensure that the screw thread can pass through the dowel when tightening. *Figure G.*



Woodpeckers[®]

PRECISION WOODWORKING TOOLS MADE IN USA
Woodpeckers, LLC Strongsville, Ohio · ***woodpeck.com***
© 2019 Woodpeckers, LLC

REV012519



WARNING! This product can expose you to chemicals, including chromium, which is known to the State of California to cause cancer and birth defects or other reproductive harm. For more information go to www.P65Warnings.ca.gov