

# **Woodpeckers<sup>®</sup>**

## **PROSCALE**

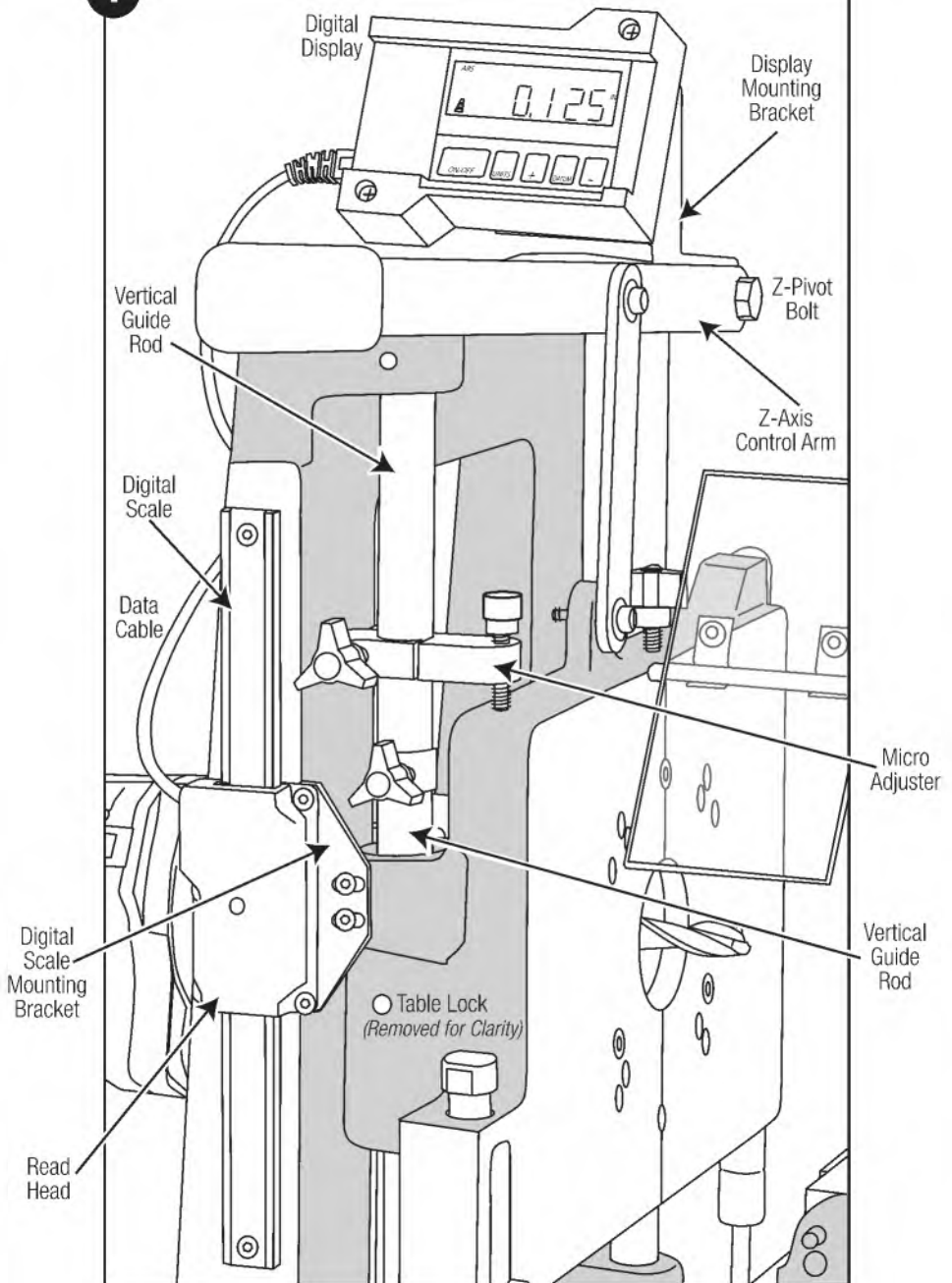
### **INSTALLATION & OPERATION**

O W N E R ' S   M A N U A L



If you think you're missing anything, email us at [mailroom@woodpeck.com](mailto:mailroom@woodpeck.com).  
You can also call us at 800-752-0725 from 9:00 a.m. to 5:00 p.m. EST Monday - Friday.

1



## INSTALLATION

If you have a newer Multi-Router machine (*red Woodpeckers label*) the Z-axis micro-adjuster is standard equipment and will already be installed on your machine. If you have an older Multi-Router machine (*black Multi-Router label*), you will first need to follow the *Micro-Adjuster Installation* instructions on Page 4.

1. Loosen the Z-pivot bolt from the Z-axis handle enough to slip the Display Mounting Bracket between the handle and the casting. Re-tighten the pivot bolt.

**FIGURE 1.**

2. Remove the graduated scale and sight glass from the operator's side of the Multi-Router. Save the two button head screws from the sight-glass.

3. Attach the Digital Scale to the casting using one of the two 1" Flat Head Screws and Nylon Spacer between the back of the Digital Scale and the casting. **DO NOT OVER TIGHTEN THESE SCREWS.** It's easiest if you install the bottom screw only at this time. The Digital Scale works best if these screws are only finger tight.

4. Pivot the Digital Scale away from the machine and slide the Read Head onto the Digital Scale with the Digital Scale Mounting Bracket to the right and the Data Cable on the left.

5. Install the second 1" Flat Head Screw and Nylon Spacer through the upper hole and into the casting.

6. Position the Read Head so the slots align with the threaded holes in the casting and secure with the button head screws that were previously holding the sight glass in Step 2.

7. Plug the Read Head Data Cable into the Digital Display.

8. Once turned on, the Digital Display will take a moment to load up software and turn on. If an error is displayed, unplug and reinsert the cable. The "UNIT" button is used to toggle between metric and inch. "DATUM" is used to zero out the display.

**FIGURE 2.**

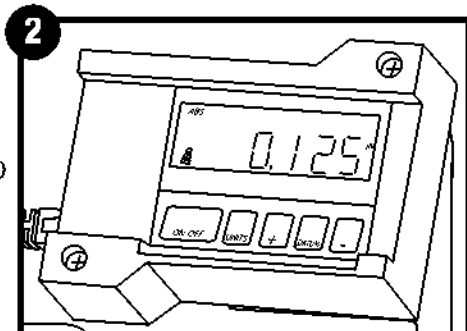
9. Stow the micro-adjuster at the top of the vertical guide rod until needed.

## TO USE THE PROSCALE

Locate the router bit to your desired zero-point and press the "DATUM" button. The Digital Display will reset to "0". Adjustments above or below the zero point will read in thousandths of an inch on the Digital Display. **FIGURE 2.**

Fine adjustments can be achieved by moving the micro-adjuster to just above the router mount table and using the knob to dial-in your precise position.

More detail on the ProScale can be found in the owner's manual.



## MICRO-ADJUSTER OPERATION

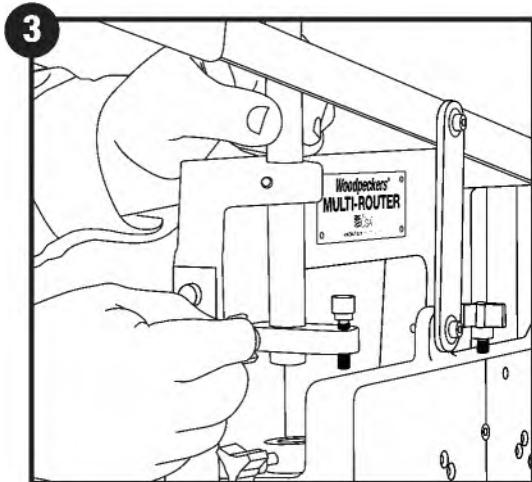
1. Clamp the micro-adjuster around the vertical guide rod above the table.

**FIGURE 3.**

2. To operate, loosen the clamp, position the end of the micro-adjuster on top of the Z-axis table and tighten the clamp.

3. Use the knob to fine-tune the position of the router either up or down.

4. When not in use, stow the micro-adjuster at the top of the vertical guide rod so it does not interfere with operation of the Z-axis.



## MICRO-ADJUSTER INSTALLATION *(Older Multi-Router systems)*

1. Loosen the two set screws that secure the operator side vertical guide rod to the vertical frame casting.
2. Loosen the vertical table lock and both vertical travel stops.
3. Slide the operator side vertical guide rod up until it clears the vertical table as shown.

**FIGURE 3.**

4. Ensure the top travel stop is resting on the vertical table.
5. Slide the micro-adjuster onto the vertical guide rod.
6. Slide the guide rod back down through the top travel stop, the vertical table casting, the bottom travel stop and the lower section of the vertical frame casting.
7. Re-tighten the set-screws to secure the vertical guide rod.
8. Now you can proceed with the Pro Scale installation.

# Woodpeckers®

PRECISION WOODWORKING TOOLS

Woodpeckers, LLC Strongsville, Ohio • **woodpeck.com**

© 2021 Woodpeckers, LLC



**WARNING!** This product can expose you to chemicals, including chromium, which is known to the State of California to cause cancer and birth defects or other reproductive harm. For more information go to [www.P65Warnings.ca.gov](http://www.P65Warnings.ca.gov)