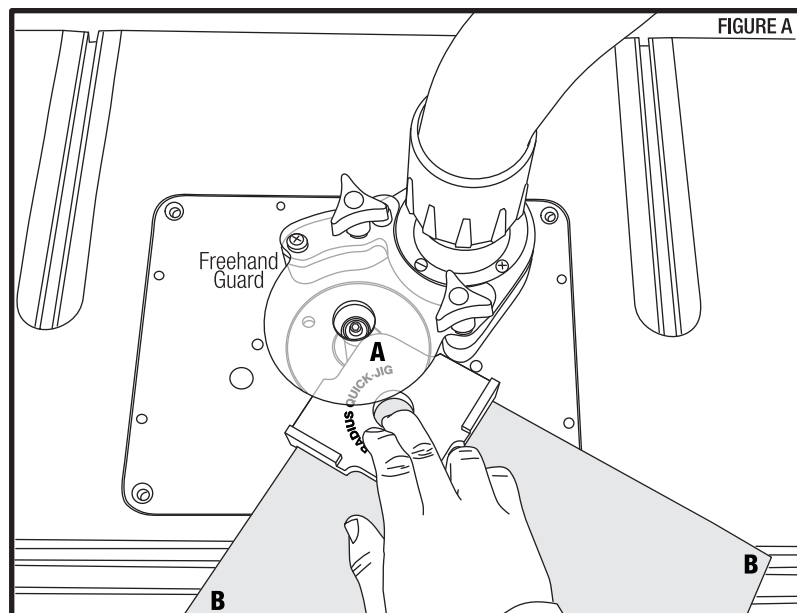


Woodpeckers® RADIUS QUICK-JIG

O W N E R ' S M A N U A L



IMPORTANT: The Radius Quick-Jig is designed specifically for use with table mounted routers. **DO NOT USE WITH HAND HELD ROUTERS.** The Radius Quick-Jig is shown above in use with the Woodpeckers Freehand Guard (*sold separately*).

- Proper feed direction is critical to safe operation and a smooth finish. Looking down from the top with the jig held firmly in place, the workpiece should be fed into the router bit from right to left. The router bit should be on a counter-clockwise path.

- The stock should always feed into the router from the long grain edge around to the end grain. This means that you have to rout two diagonally opposed corners from each side of the board. In the illustration, the “A” corners are done as shown, then the board is flipped over to do the “B” corners. **FIGURE A.**

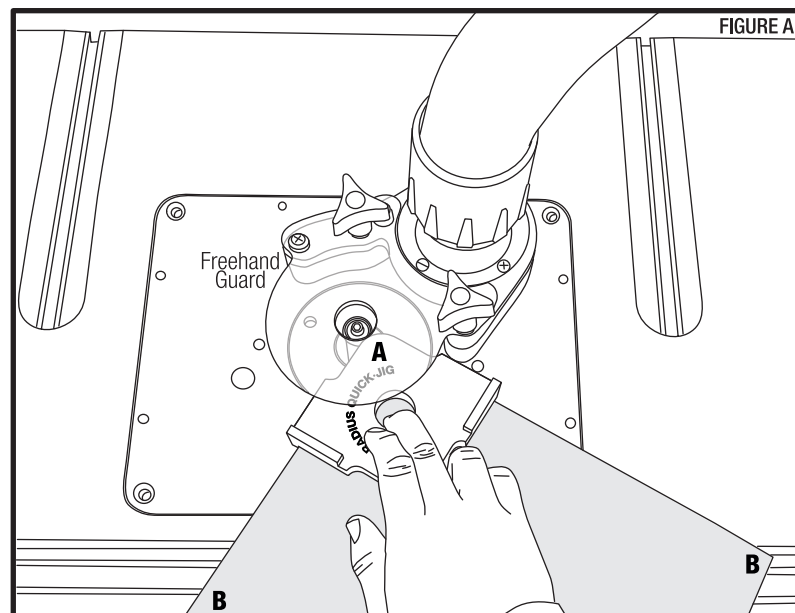


Scan the QR code above
to watch the video
or visit woodpeck.com
under the video tab towards
the bottom of the product page.

If you think you're missing anything, email us at mailroom@woodpeck.com.
You can also call us at 800-752-0725 from 9:00 a.m. to 5:00 p.m. EST Monday - Friday.

Woodpeckers® RADIUS QUICK-JIG

O W N E R ' S M A N U A L



IMPORTANT: The Radius Quick-Jig is designed specifically for use with table mounted routers. **DO NOT USE WITH HAND HELD ROUTERS.** The Radius Quick-Jig is shown above in use with the Woodpeckers Freehand Guard (*sold separately*).

- Proper feed direction is critical to safe operation and a smooth finish. Looking down from the top with the jig held firmly in place, the workpiece should be fed into the router bit from right to left. The router bit should be on a counter-clockwise path.

- The stock should always feed into the router from the long grain edge around to the end grain. This means that you have to rout two diagonally opposed corners from each side of the board. In the illustration, the “A” corners are done as shown, then the board is flipped over to do the “B” corners. **FIGURE A.**



Scan the QR code above
to watch the video
or visit woodpeck.com
under the video tab towards
the bottom of the product page.

If you think you're missing anything, email us at mailroom@woodpeck.com.
You can also call us at 800-752-0725 from 9:00 a.m. to 5:00 p.m. EST Monday - Friday.

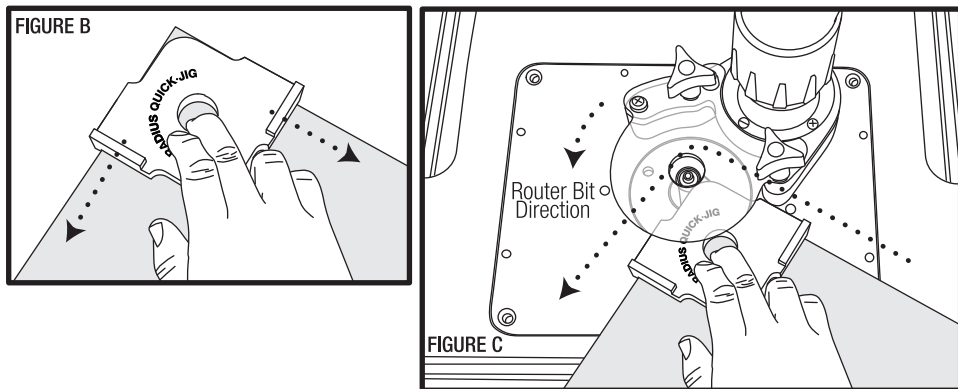
HOW TO GET THE BEST RESULTS FROM YOUR RADIUS QUICK-JIG

The Radius Quick-Jig is a template for marking corner radii and also serves as a template for guiding along flush trim style router bits. The router bit must have a guide bearing on the tip. Common diameters are 1/2" to 3/4". The cutting edge of the bit should extend just barely above the wood but not so much that the cutters will come in contact with the aluminum Radius Quick-Jig. The bearing should ride solidly against the edge of the Radius Quick-Jig.

IMPORTANT: The Radius Quick-Jig is designed specifically for use with table mounted routers. **DO NOT USE WITH HAND HELD ROUTERS.**

1. Pull the Radius Quick-Jig down onto the corner of the wood and hold it firmly in place, slowly feed it into the router bit. **FIGURE B.**
2. Follow around the profile with the material and jig rotating in a counter-clockwise direction. A better finish can be achieved if small amounts are removed in multiple passes versus one heavy pass. **FIGURE C.**

WARNING! Keep hands, fingers, clothing and everything else well away from the router bit and the outside edges of the jig. **DO NOT HOLD THE JIG FROM THE SIDES.** The center hole is a good place to pull back from. Pull in the direction shown in **FIGURE B.**



Pull Radius Quick-Jig/Wood in a counter-clockwise direction.

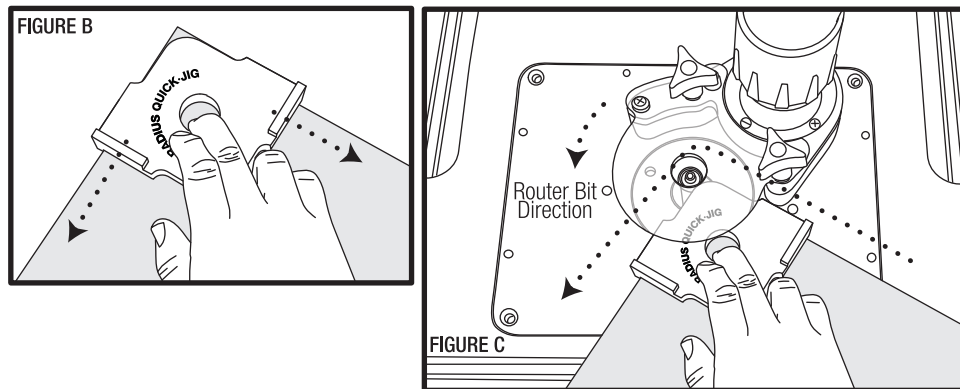
HOW TO GET THE BEST RESULTS FROM YOUR RADIUS QUICK-JIG

The Radius Quick-Jig is a template for marking corner radii and also serves as a template for guiding along flush trim style router bits. The router bit must have a guide bearing on the tip. Common diameters are 1/2" to 3/4". The cutting edge of the bit should extend just barely above the wood but not so much that the cutters will come in contact with the aluminum Radius Quick-Jig. The bearing should ride solidly against the edge of the Radius Quick-Jig.

IMPORTANT: The Radius Quick-Jig is designed specifically for use with table mounted routers. **DO NOT USE WITH HAND HELD ROUTERS.**

1. Pull the Radius Quick-Jig down onto the corner of the wood and hold it firmly in place, slowly feed it into the router bit. **FIGURE B.**
2. Follow around the profile with the material and jig rotating in a counter-clockwise direction. A better finish can be achieved if small amounts are removed in multiple passes versus one heavy pass. **FIGURE C.**

WARNING! Keep hands, fingers, clothing and everything else well away from the router bit and the outside edges of the jig. **DO NOT HOLD THE JIG FROM THE SIDES.** The center hole is a good place to pull back from. Pull in the direction shown in **FIGURE B.**



Pull Radius Quick-Jig/Wood in a counter-clockwise direction.

Woodpeckers®

Woodpeckers, LLC Strongsville, Ohio
woodpeck.com
© 2021 Woodpeckers, LLC



At Woodpeckers we are constantly reviewing & improving our tools. The most current version of our instruction manuals are always available to download/print at **woodpeck.com** via the tool's page.
(Located in the bottom section of the tool page under the "Additional Information" or "Instructions" tabs.)



Be the first to know all the new products & sales by subscribing to our eClub.
(Located at the top center of our webpage **woodpeck.com**.)



Subscribe to our YouTube channel to stay up-to-date on all the latest tool tips & tricks.



Interact with us! Follow us on Facebook & Instagram!



WARNING! This product can expose you to chemicals, including chromium, which is known to the State of California to cause cancer and birth defects or other reproductive harm. For more information go to www.P65Warnings.ca.gov

Woodpeckers®

Woodpeckers, LLC Strongsville, Ohio
woodpeck.com
© 2021 Woodpeckers, LLC



At Woodpeckers we are constantly reviewing & improving our tools. The most current version of our instruction manuals are always available to download/print at **woodpeck.com** via the tool's page.
(Located in the bottom section of the tool page under the "Additional Information" or "Instructions" tabs.)



Be the first to know all the new products & sales by subscribing to our eClub.
(Located at the top center of our webpage **woodpeck.com**.)



Subscribe to our YouTube channel to stay up-to-date on all the latest tool tips & tricks.



Interact with us! Follow us on Facebook & Instagram!



WARNING! This product can expose you to chemicals, including chromium, which is known to the State of California to cause cancer and birth defects or other reproductive harm. For more information go to www.P65Warnings.ca.gov