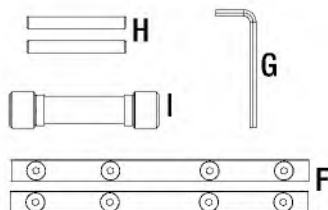
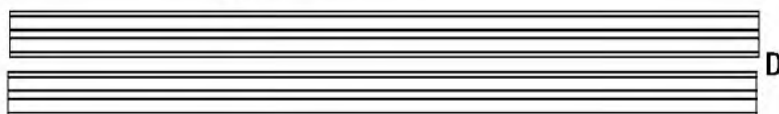
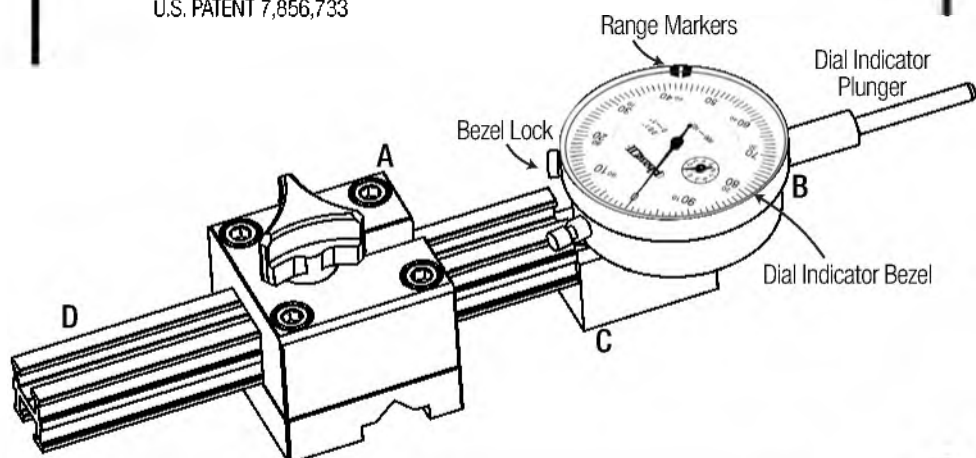


Woodpeckers®

SAW GAUGE 2.0

OWNER'S MANUAL

U.S. PATENT 7,856,733



- A. (1) Saw Gauge Main Body with Knob
- B. (1) Dial Indicator*
- C. (1) Foot Piece & Foot Connector
- D. (1) 6" Double T-Track
- E. (2) 14" Double T-Track
- F. (2) Double T-Track Connectors with (8) Track Stop Screws
- G. (1) 1/8" Hex Key
- H. (2) 1/4" Pins
- I. (1) Cradle

**Models SG2-SYS-ND and SG2-WP-ND do not come with Dial Indicators.*

Saw Gauge 2.0 provides an easy and accurate way to measure parallelism between the miter slot, saw blade and rip fence of your table saw. With all three parallel to each other, your saw will cut cleaner, burn less and deliver more consistent results.

If you think you're missing anything, email us at mailroom@woodpeck.com.
You can also call us at 800-752-0725 from 9:00 a.m. to 4:00 p.m. EST Monday - Friday.

ACCURATE RESULTS REGARDLESS OF MITER SLOT SIZE

1. Place the two 1/4" Pins in the bottom of the miter gauge slot. Put the Cradle between the two pins, forcing one to each side. **FIGURES A & A-1.**

2. Test for proper arrangement by applying slight downward pressure on the Cradle while sliding back and forth in the slot. The Pins should stay trapped between the Cradle ends. Regardless of the miter gauge slot size or any variation from end to end, the Cradle will always be perfectly centered in the slot.

USING THE SAW GAUGE 2.0

CHECKING SAW BLADE:

1. Place the Vee-Slot of the Saw Gauge on the Cradle and locate at approximately the middle of the saw blade.

2. Loosen the Knob on the Main Body and extend the Track until the Dial Indicator Plunger is somewhere near the middle of its 1" travel. Tighten the Knob until snug. **FIGURE B.**

3. Move the Saw Gauge toward the front of the blade. Adjust the Dial Indicator Bezel to "0" and secure the Bezel Lock. **FIGURE C.**

4. With slight downward pressure, move the entire Saw Gauge toward the rear of the saw blade.

FIGURE A

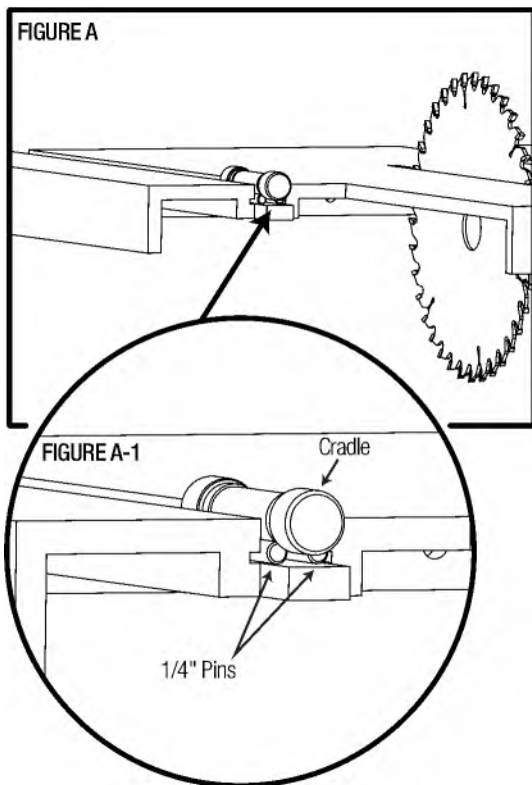


FIGURE B

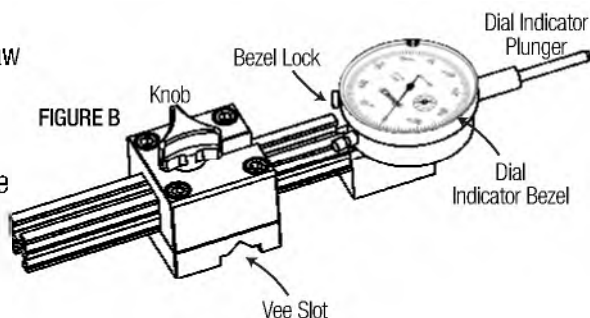
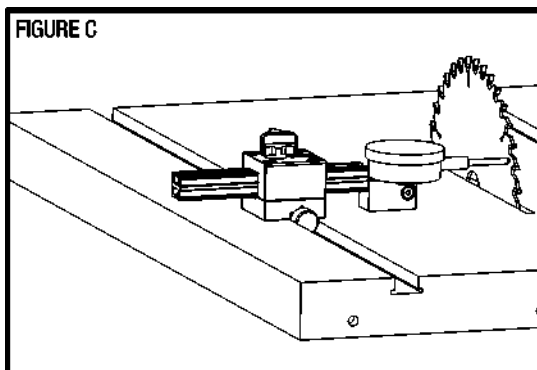


FIGURE C



- a. If the Dial Indicator moves counter-clockwise, the rear of the blade is further from the miter slot than the front.
- b. If the Dial Indicator moves clockwise, the rear of the blade is closer to the miter slot.

In a perfectly aligned saw, the Dial Indicator will read the same at the rear of the blade as it does at the front of the blade. *Follow your table saw manufacturer's instructions for alignment of the arbor to the miter slot.*

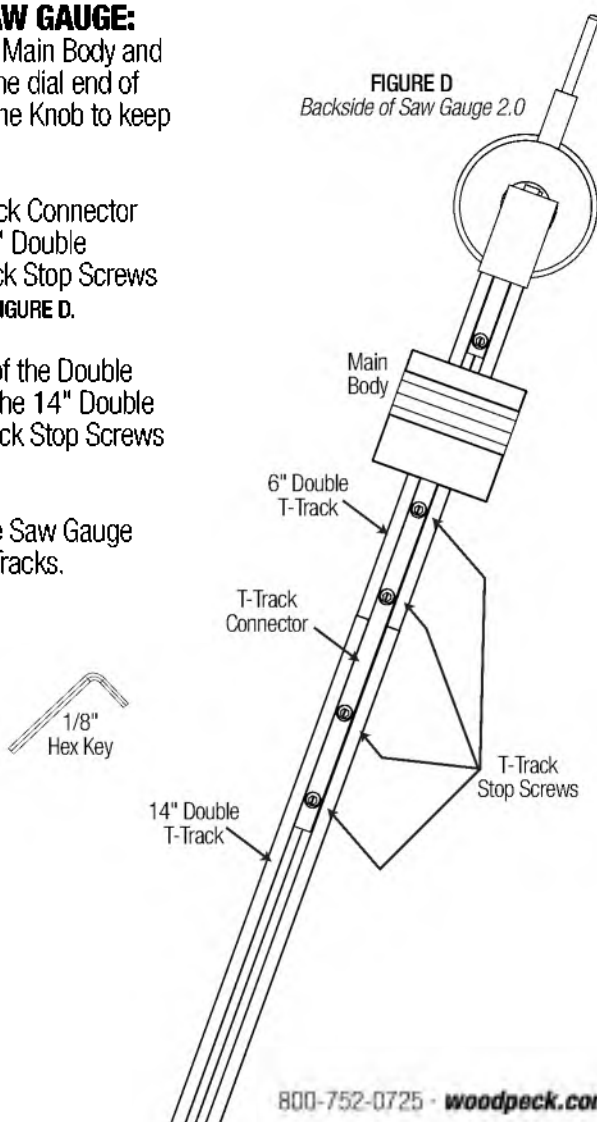
EXTENDING THE SAW GAUGE:

1. Loosen Knob on the Main Body and slide the Main Body to the dial end of the Saw Gauge. Snug the Knob to keep it in place.

2. Slide a Double T-Track Connector into the bottom of the 6" Double T-Track. Tighten the Track Stop Screws with the 1/8" Hex Key. **FIGURE D.**

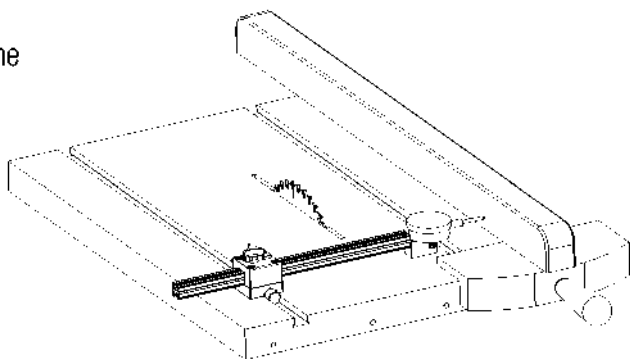
3. Slide the other end of the Double T-Track Connector into the 14" Double T-Track. Tighten the Track Stop Screws with the 1/8" Hex Key.

4. Repeat to extend the Saw Gauge with two 14" Double T-Tracks.



CHECKING SAW FENCE:

1. Place your Saw Gauge on the Cradle.
3. Lower saw blade below table surface.
4. With the Knob loosened, extend the Double T-Track out until the Dial Indicator Plunger is somewhere near the middle of its 1" travel as it presses against the rip fence.
5. Tighten Knob until snug.
6. Check the fence in the same manner you check the blade. Set zero at the front, then check at the rear. *Follow your fence manufacturer's instructions for fence adjustment.*



NOTE: For best results, check rip fence at multiple points along its travel. This will verify that the fence rail is perpendicular.

HANDLE YOUR SAW GAUGE CAREFULLY. Avoid banging or dropping the pins and the cradle. The precision of the saw gauge depends on their smooth, polished surfaces rolling perfectly against each other. A periodic wipe down of all exposed steel surfaces with a light oil (Camellia Oil is a good choice) will insure several generations of satisfaction with this precision instrument.

Woodpeckers®

Woodpeckers, LLC Strongsville, Ohio

woodpeck.com

© 2023 Woodpeckers, LLC



woodpeck.com

At Woodpeckers we are constantly reviewing & improving our tools. The most current version of our instruction manuals are always available to download at woodpeck.com.

(Located in the bottom section of the tool's page under the "Additional Information" or "Instructions" tabs.)



Be the first to know all the new products, *OneTIME* Tools & sales by subscribing to our eClub. *(Located at the top center of our webpage woodpeck.com.)*



YouTube

Subscribe to our YouTube channel to stay up-to-date on all the latest tool tips & tricks.



INTERACT WITH US! Follow us on Facebook, Instagram & TikTok!



Enjoy shop tips, project ideas, tool techniques & more in our Woodworking Resource Center/Blog. *(Located at the bottom center of our webpage woodpeck.com.)*



WARNING! This product can expose you to chemicals, including chromium, which is known to the State of California to cause cancer and birth defects or other reproductive harm. For more information go to www.P65Warnings.ca.gov