

Woodpeckers®

CAM-A-LINE™ DOWEL GUIDE

OWNER'S MANUAL

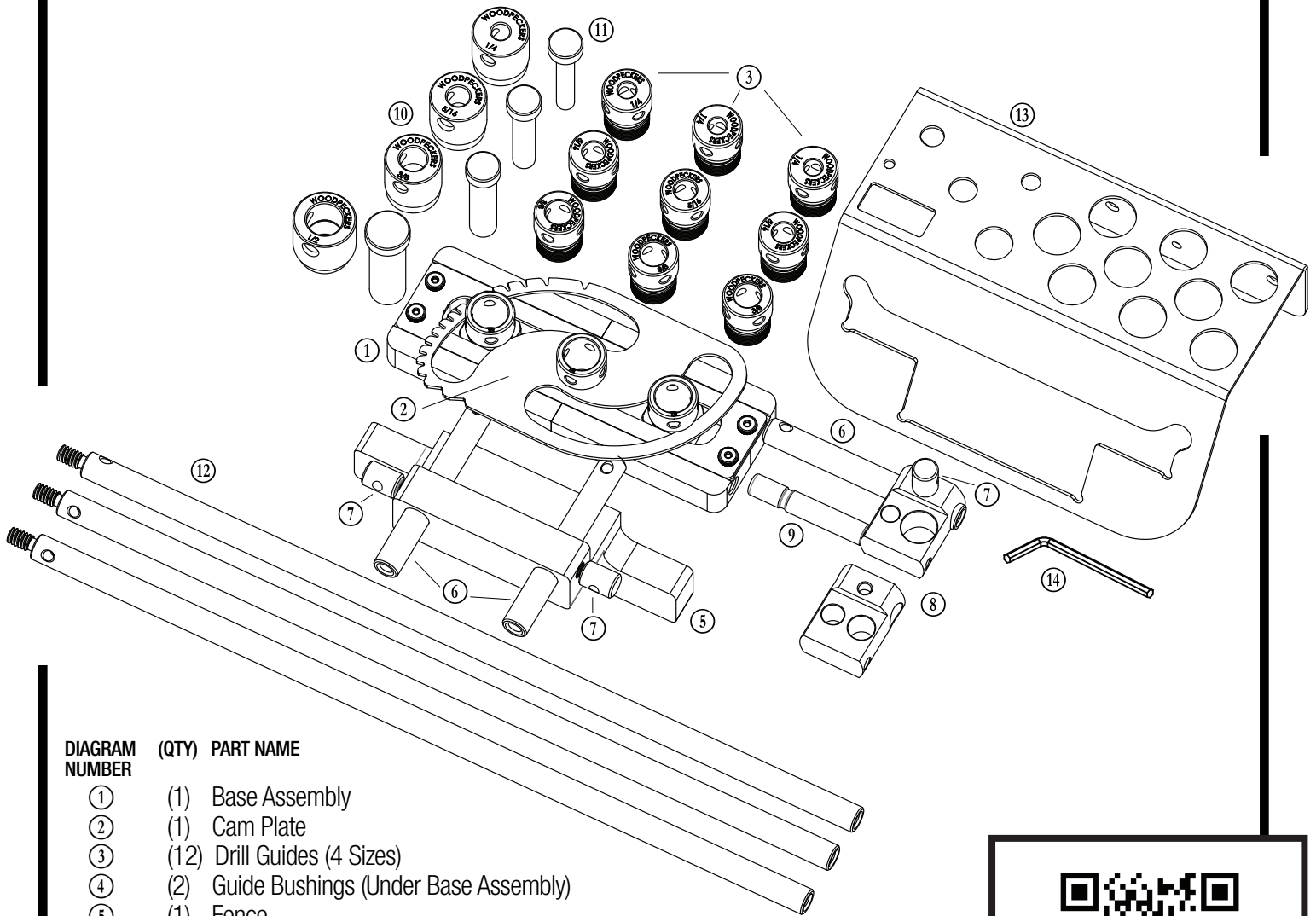


DIAGRAM NUMBER	(QTY)	PART NAME
①	(1)	Base Assembly
②	(1)	Cam Plate
③	(12)	Drill Guides (4 Sizes)
④	(2)	Guide Bushings (Under Base Assembly)
⑤	(1)	Fence
⑥	(3)	Guide Rods
⑦	(3)	Lock Knobs
⑧	(2)	Stop Blocks
⑨	(1)	Work Stop Screw
⑩	(4)	Drill Stop Collars (4 Sizes)
⑪	(4)	Index Pin (4 Sizes)
⑫	(3)	Extension Rods
⑬	(1)	Rack-It
⑭	(1)	Hex Wrench



Scan the QR code above
to watch the video
or visit woodpeck.com
under the video tab towards
the bottom of the product page.

If you think you're missing anything, email us at mailroom@woodpeck.com.
You can also call us at 800-752-0725 from 9:00 a.m. to 4:00 p.m. EST Monday - Friday.

YOU CAN USE YOUR CAM-A-LINE TO:

1. Drill dowels for perpendicular or mitered joints.
2. Drill chains of dowel holes for joining boards.
3. Drill dowels in the center of your board.

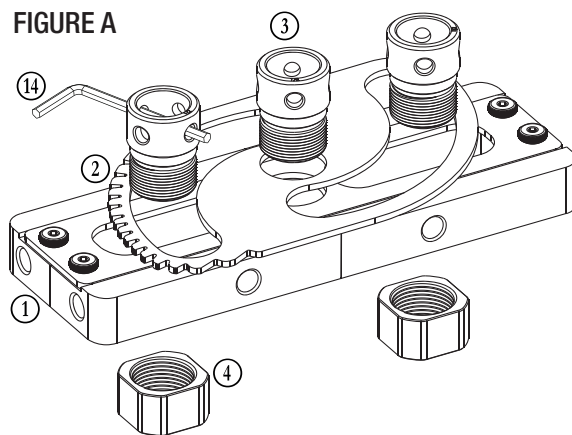
I. REMOVING & INSTALLING DRILL GUIDE BUSHINGS

1. Unthread the Drill Guides (3) to remove them. The outer two are threaded into brass Guide Bushings (4) and the center Drill Guide is threaded into the Base Assembly (1). Use the Hex Wrench (14) for additional leverage by inserting into the holes in the Drill Guides. **FIGURE A.**

2. Replace the removed Drill Guides with your desired size.
3. Snug up all (3) Drill Guides using the Hex Wrench.

NOTE: If all (3) Drill Guides are removed simultaneously, begin re-installation with the center Drill Guide which is critical to align the Cam Plate (2).

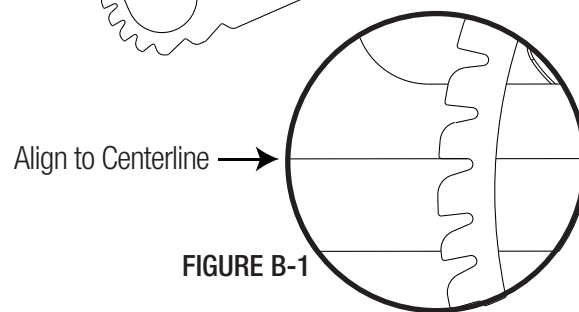
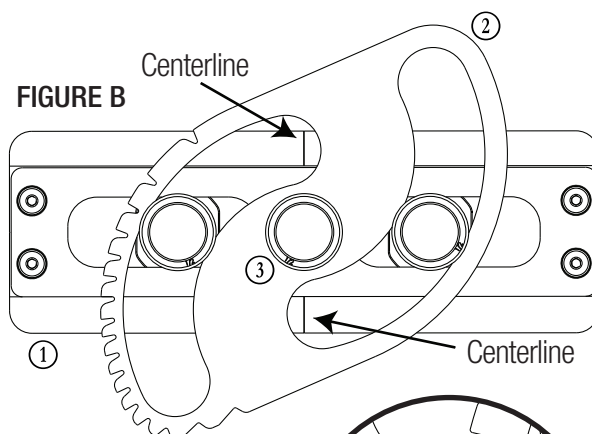
FIGURE A



II. ADJUSTING THE SPACING OF THE DRILL GUIDES

1. Loosen the (3) Drill Guides (3) to allow the Cam Plate (2) to rotate.
2. Set desired dowel spacing (distance between centers) of the Drill Guides by rotating the Cam Plate and aligning the flat of the notch to the edge of the stainless plate in the Base Assembly (1). **FIGURE B.** Each notch is engraved with its corresponding dowel spacing. **FIGURE B-1.**

3. First, hand-tighten one of the outer Drill Guides to lock the Cam Plate in place. Then tighten all (3) Drill Guides using the Hex Wrench. They should be snug, but do not over-tighten which may damage the Cam Plate.

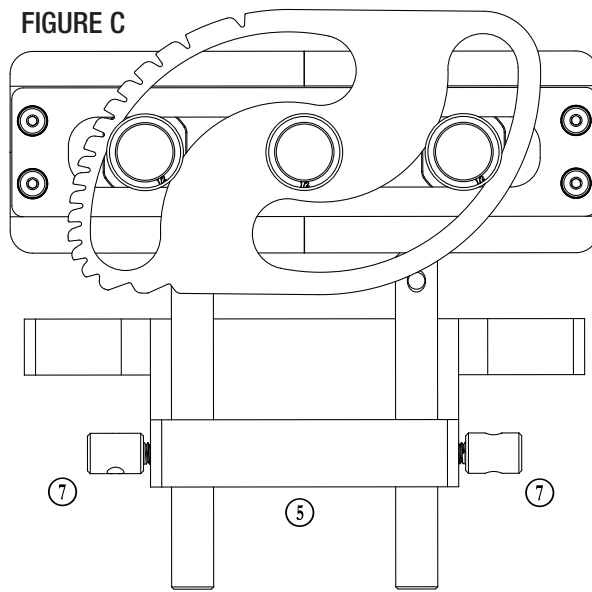


III. SETTING THE ADJUSTABLE FENCE

1. To adjust the Fence (5), loosen the Lock Knobs (7). **FIGURE C.**
2. Align Cam-A-Line's engraved centerline to the desired layout on the workpiece. Typically, dowels are centered on the stock, but may be offset.
3. Tighten the Lock Knobs using the Hex Wrench (14) for additional leverage.

NOTE: The Fence is adjustable up to 2-1/4" from the center of the Drill Guides using the standard Guide Rods. The optional Extension Rods can be chained together to extend the reach of the Fence.

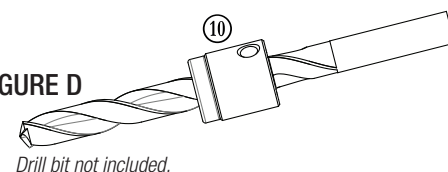
FIGURE C



IV. DRILL STOP COLLAR

Drill Stop Collars (10) are included in the same sizes as the Drill Guides. To install on your drill bit, use the Hex Wrench (14) to tighten on your drill bit. Add 1" to the desired drilling depth to accommodate the length of the Drill Guides. **FIGURE D.**

FIGURE D



Drill bit not included.

V. USING CAM-A-LINE TO DRILL DOWELS

A. ALIGNING AND DRILLING PERPENDICULAR OR MITERED JOINTS

1A. Align the joint on your workpiece the way you want. Mark a line centered, across, and square to the joint. **FIGURE E.**

2A. Adjust the Fence to position Cam-A-Line's engraved Centerline where you like (See Part II & III, Pg 2).

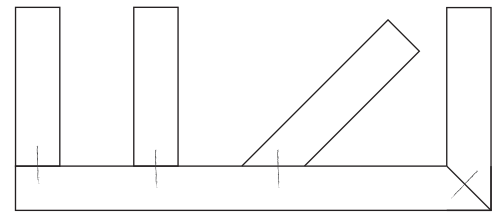
3A. With the Fence on the face of your board, align Cam-A-Line's engraved Centerline to the centerline of your joint.

4A. Clamp the Fence to the workpiece.

5A. While holding Cam-A-Line steady, drill straight down through the Drill Guides. Avoid excessive sideways pressure that may damage your drill bit or Drill Guides.

6A. Repeat these steps for the mating joint, ensuring the Fence references the same face for both mating workpieces.

FIGURE E



B. USING THE STOP BLOCK FOR REPEATABLE DOWEL POSITIONING

1B. Install the Stop Block (8) onto the Guide Rod (6) (or Extension Rod (12) if applicable). The Guide Rod can be installed into any of the (4) threaded holes on the side of the Base Assembly (1). **FIGURE F.**

NOTE: There are (2) Stop Blocks. Each is drilled with (2) holes for use as index pin locations. One Stop Block has 1/4" & 1/2" while the other has 3/8" & 5/16".

2B. Align Cam-A-Line to your joint and secure the stop on the edge of your workpiece. **FIGURE G.**

3B. Clamp Cam-A-Line and drill the dowels at the desired spacing.

4B. For the mating workpiece, remove the Guide Rod without moving the Stop, and swap to the other side, ensuring the Guide Rod is tightened. The Fence (5) must reference the same face on both mating pieces.

5B. For narrow stock, the Work Stop Screw (9) can be installed into the side of the Stop Block (8), extending its reach below Cam-A-Line. **FIGURE H.** When swapping to the other side for the mating workpiece, a small piece of scrap and the Index Pin (11) can be used to set the stop distance. **FIGURE I.**

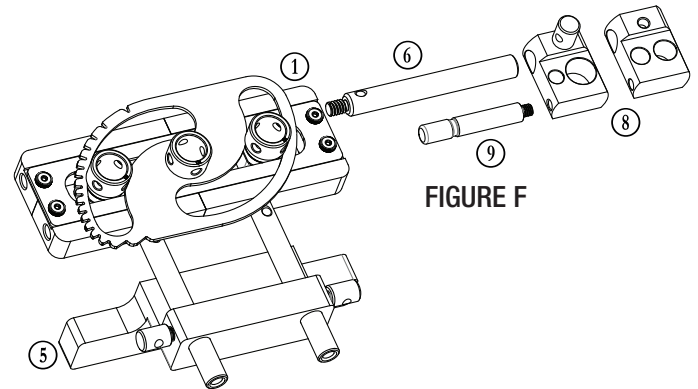


FIGURE F

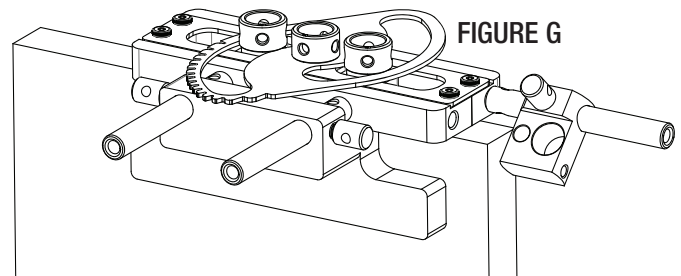


FIGURE G

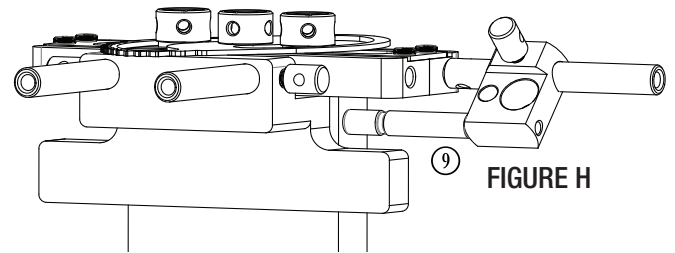


FIGURE H

C. DRILLING DOWELS FOR PANEL JOINING

1C. Fix the appropriate Stop Block (8) onto the side Guide Rod (6) or Extension Rod (12).

2C. Drill your first dowel using the Index Pin in the outer Drill Guide as to index the edge of your stock. **FIGURE J-1.**

3C. After your first dowel is drilled, slide Cam-A-Line down the board and place the Index Pin (11) through the Stop Block into the drilled hole. Drill your next dowel.

4C. Repeat until complete with one board. **FIGURE J.**

5C. To transfer Cam-A-Line to the mating workpiece, switch the Stop Block to the other side of Cam-A-Line, without adjusting the Stop Block.

6C. After installing the Guide Rod to the other side of Cam-A-Line, drill your first dowel using the Index Pin in the outer Drill Guide, and your remaining dowels using the Stop Block indexing.

FIGURE I

First dowel indexed from edge

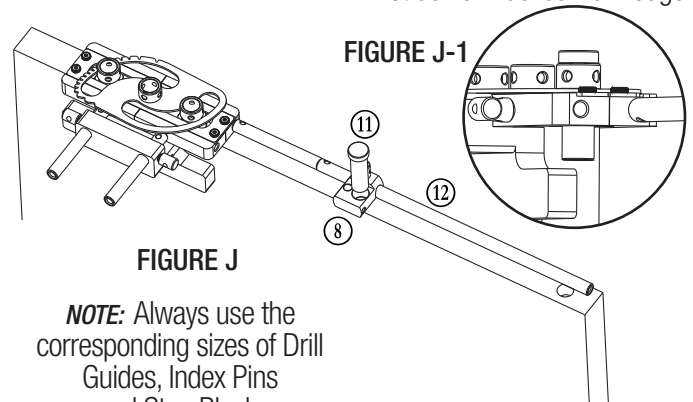
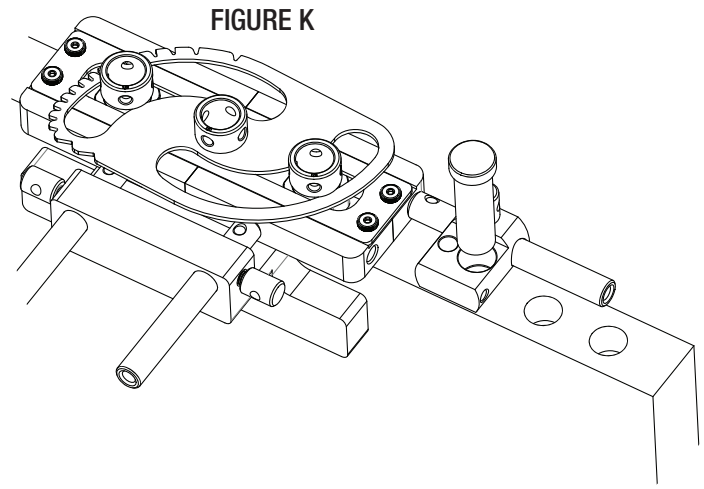


FIGURE J-1

FIGURE J

NOTE: Always use the corresponding sizes of Drill Guides, Index Pins and Stop Block.

NOTE: Using the Extension Rod is optimal as closely spaced dowels are not necessary for most panel joining, but if you don't have the Extension Rods, you can still index with the Guide Rod. **FIGURE K.**

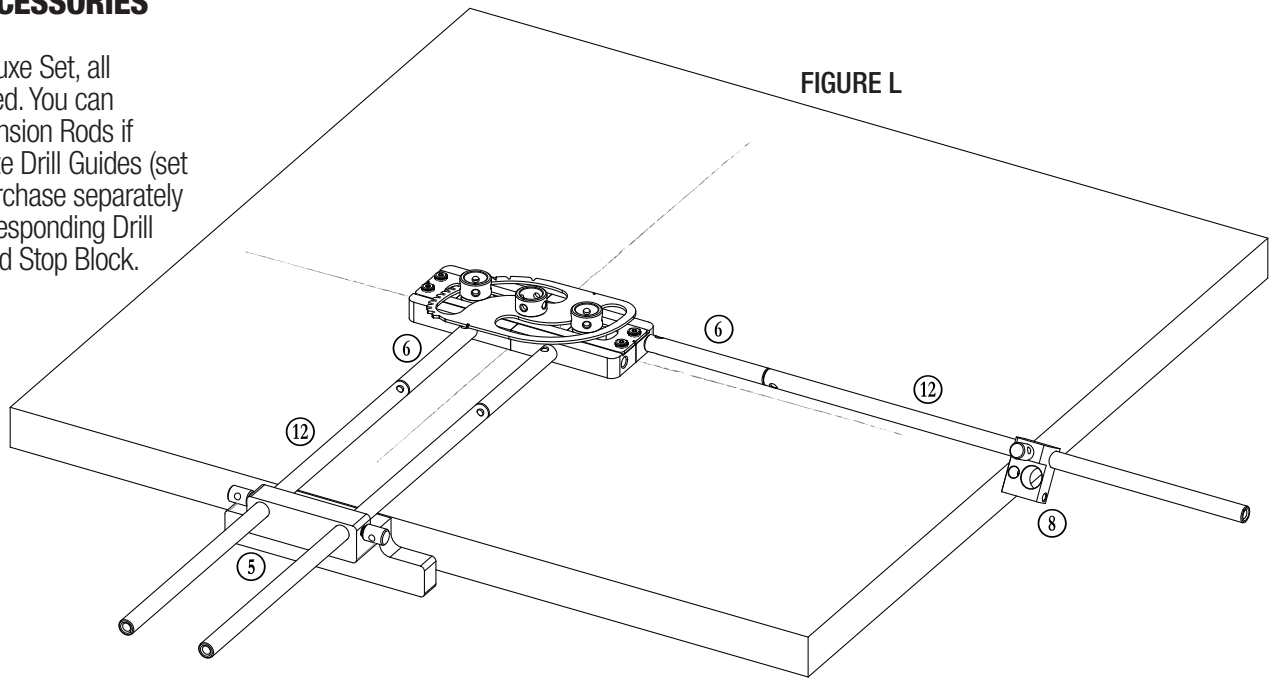


D. DRILLING MID-FIELD ON YOUR BOARD

- 1D. Lay out the centerline of your dowels.
- 2D. Attach the Extension Rods ⑫ by screwing them directly into the Guide Rods ⑥.
- 3D. Align Cam-A-Line to the centerline of your dowels. Use both the Fence ⑤ and side Stop Block ⑧ (with Extension Rods ⑫ as necessary) for mid-field stability. See Figure L.

VI. ADDITIONAL ACCESSORIES

If you purchased the Deluxe Set, all accessories were included. You can purchase additional Extension Rods if necessary. Also, each size Drill Guides (set of 3) are available for purchase separately and comes with the corresponding Drill Stop Collar, Index Pin, and Stop Block.






WARNING! To reduce the risk of injury keep hands away from moving parts. Refer to your power tool manual for proper setup and use.



WARNING! To reduce the risk of injury, wear safety goggles or glasses with side shields, ear protection & a dust mask.

Woodpeckers®

Woodpeckers, LLC Strongsville, Ohio
woodpeck.com
 © 2024 Woodpeckers, LLC

At Woodpeckers we are constantly reviewing & improving our tools. The most current version of our instruction manuals are always available to download at woodpeck.com. (Located in the bottom section of the tool's page under the "Additional Information" or "Instructions" tabs.)

eCLUB Be the first to know all the new products, **OneTIME Tools & sales** by subscribing to our eClub. (Located at the top center of our webpage woodpeck.com.)

YouTube Subscribe to our YouTube channel to stay up-to-date on all the latest tool tips & tricks.

f i d INTERACT WITH US! Follow us on Facebook, Instagram & TikTok!

KNOTHOLE Enjoy shop tips, project ideas, tool techniques & more in our Woodworking Resource Center/Blog. (Located at the bottom center of our webpage woodpeck.com.)

WARNING!
 This product can expose you to chemicals, including chromium, which is known to the State of California to cause cancer and birth defects or other reproductive harm.
 For more information go to www.P65Warnings.ca.gov