

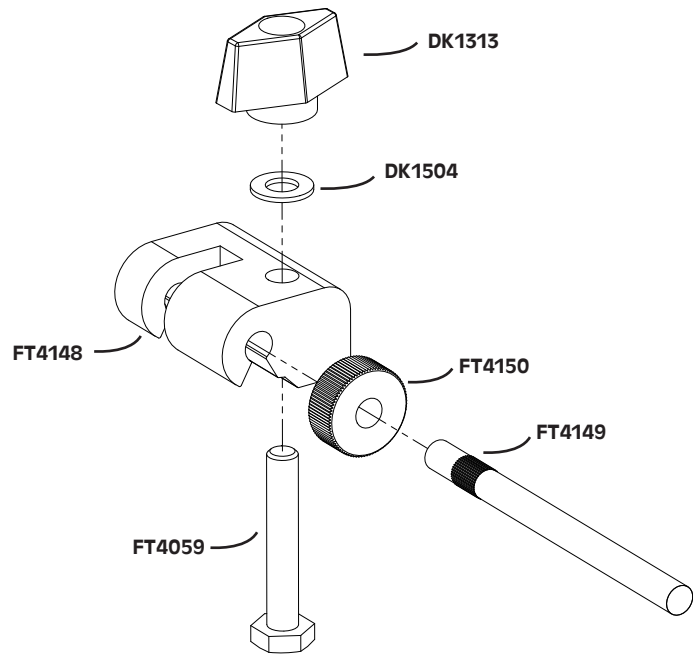
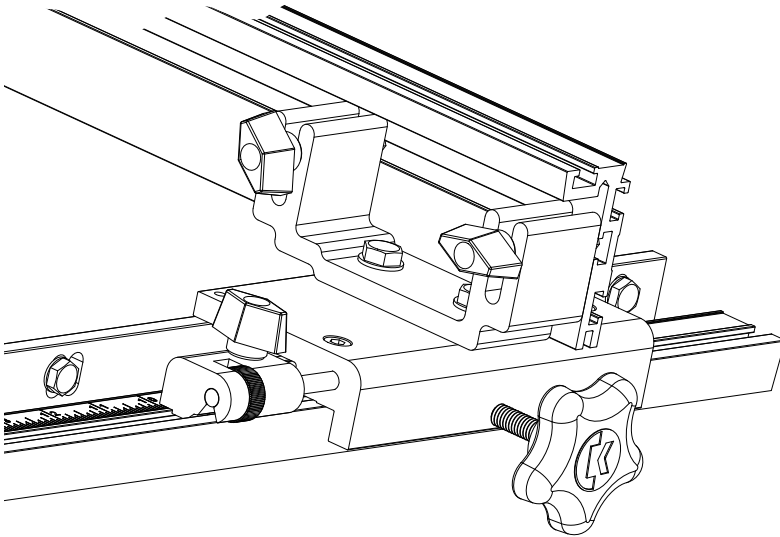


www.kregtool.com  
800.447.8638

## Precision Micro-Adjuster

KMS7215

Thank you for purchasing the Micro-Adjuster accessory for the Kreg Precision Band Saw Fence. The Micro-Adjuster is the perfect companion to the Precision Band Saw Fence. This accessory will work in harmony with the fence to produce accurate cuts normally unavailable on a woodworking machine. Fractional adjustments of 1/64" can easily be "Dialed-in" by rotating the Micro-Adjust Wheel.



Part Number	Quantity	Description
DK1313	1	Black T-Knob
DK1504	1	1/4" Brass Washer
FT4059	1	1/4-20 x 1-1/4" Hex Bolt
FT4148	1	Micro-Adjust Block
FT4149	1	Micro-Adjust Bar
FT4150	1	Micro-Adjust Wheel

### Assembling the Micro-Adjuster

The Micro-Adjust Block has a profile that seats in the accessory channel on top of the Band Saw Fence Mounting Rail. The accessory channel was designed to lock a 1/4-20 bolt in place to provide a solid anchoring point for the Micro-Adjuster. The Micro-Adjuster then interfaces with the Band Saw Fence by threading in the accessory mounting hole on the band saw fence Clamp Block. When the Micro-Adjuster is locked to the Mounting Rail the position of the fence relative to the blade can be changed by a minute amount by rotating the Micro-Adjust Wheel.

1. Insert the head of the 1/4-20 x 1-1/4" bolt into the accessory channel of the Band Saw Fence Mounting Rail.
2. Place the Micro-Adjust Block assembly over the threads of the previously installed bolt. Orient the threaded bar of the Micro-Adjust Block assembly toward the Clamp Block Assembly on the Band Saw Fence.
3. Place a 1/4" Brass Washer over the protruding threads of the anchoring bolt and follow with the Black T-Knob. A rigid connection between the Micro-Adjust Block assembly and the Mounting Rail is formed after tightening the Black T-Knob.

4. Release the Micro-Adjust Block assembly by loosening the knob and move the entire assembly toward the Band Saw Fence Clamp Block to align the Micro-Adjust Bar with the accessory hole in the Clamp Block.
5. Thread the Micro-Adjust Bar into the Clamp Block by rotating the Micro-Adjust wheel till the threads of the Bar are fully engaged in the Clamp Block.

### Operation

Once installed you can easily "engage" or "disengage" the Micro-Adjust with a simple turn of the knob. The Band Saw will adjust much more smoothly if the Lock Down Knob on the Band Saw Fence is kept at a "snug" position while turning the Micro-Adjust Wheel. Experiment with this method of adjustment by aligning the fractional lines on the Measuring Tape. Once the desired position is attained make certain that you properly tighten the Lock Down Knob on the Band Saw Fence prior to placing the material against the fence to make the cut.



KREG TOOL COMPANY  
201 Campus Drive  
Huxley, Iowa 50124

www.kregtool.com

800.447.8638