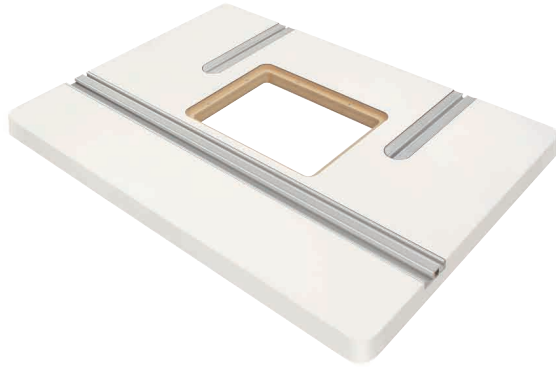


Woodpeckers®

Router Table Top Assembly Instructions



RECOMMENDED TOOLS

- Drill
- 1/8" Drill Bit
- #2 Phillips Screw Driver
- 12" Rule

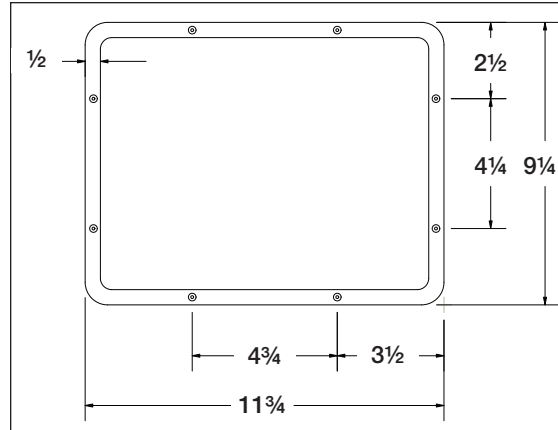
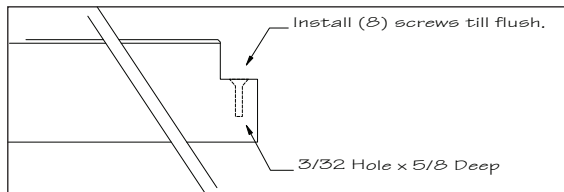
INCLUDED HARDWARE

- (14) #10 x 3/4" Type "A" Pan Head Screws
- (8) #6 x 1/2" Flat Head Screws.
- (17) 1/4-20 Pan Head Screws
- (17) Oval Nuts

INSTALLING WEAR PAD SCREWS

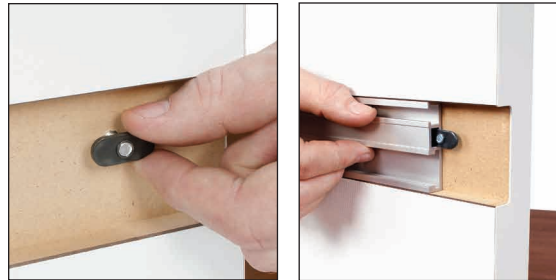
Your router table includes (8) Wear Pad Screws to serve as wear surfaces for the leveling screws in your Woodpeckers Router Mounting Plate.

The plate opening in your table should already be pre-drilled for these screws. Simply install the screws until they're flush. No adjustment is necessary.



If holes need to be drilled for the wear pad screws, use a 3/32" drill bit for the pilot holes. Drill the holes approximately 5/8" deep. Countersink the hole with a 82° bit just deep enough to set the screw head flush. The drawing above shows approximate locations.

The router plate opening will fit most 9 1/4 x 11 3/4 X 3/8 thick plates or lifts. In most climates, the table will not swell from humidity, however if living in a coastal region, you may want to apply furniture wax to the inside of the opening. Wax is an excellent moisture sealant.

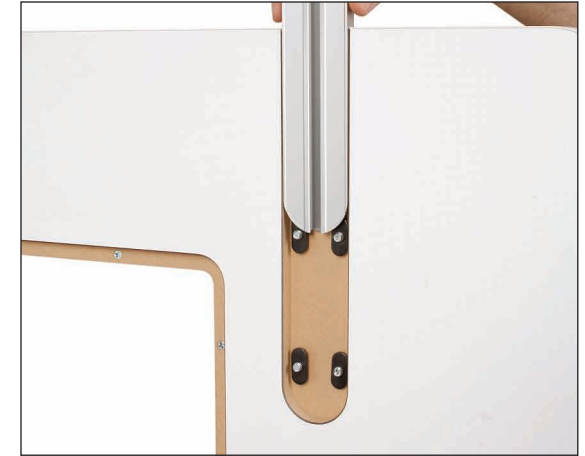


INSTALLING COMBO TRACK

Begin by orienting the router table upright. The table needs to be secured vertically so that you can use two hands to install the track.

You'll use (5) of the 1/4-20 Pan Head Screws and (5) Oval Nuts. Insert the screws from the bottom of the table and loosely thread on the oval nuts from inside the slot.

Next, slide the track through the oval nuts as shown. Make sure the oval nuts are in the groove and not under it. Now tighten the (5) screws.



INSTALLING DP (FENCE) TRACK

Continue keeping the table upright. Each DP Track uses (6) of the 1/4-20 Pan Head Screws and Oval Nuts. Insert the screws from the bottom of the table and loosely thread on the oval nuts.

Next, slide the track down through the oval nuts and make sure all six are in the two slots in the bottom of the track. Now tighten the (6) screws.

ATTACHING THE TABLE TO A BASE

The table can be mounted on a variety of bases. The base should be flat and stable plus provide support to within 3" of the edge of the table in the short direction. (14) Screws are included however your particular installation may require more.

Steel bases are more stable from humidity and temperature than wooden frames. However, if a wooden cabinet will be used, plywood is your best choice with solid lumber being second. If using solid lumber, avoid moisture sensitive species like oak and pine.

As for fasteners, we recommend #10 Type "A" Pan Head Sheet Metal Screws. Some are provided with this table. The screw length will depend on the framing method. The screw should penetrate the bottom of the table by approximately 3/4". Pre-drill a 9/64" pilot hole for each screw. (5/32" is a good second choice).

IMPORTANT!

DON'T DRILL THROUGH THE TABLE.
The pilot holes only need to be 3/4" deep.