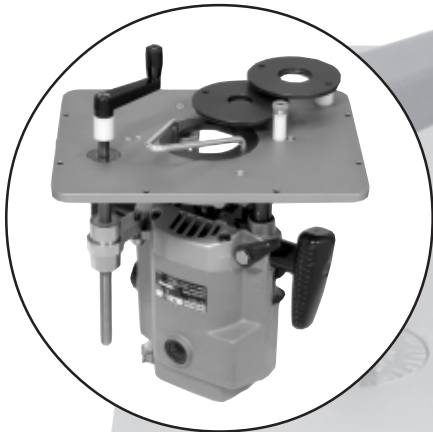
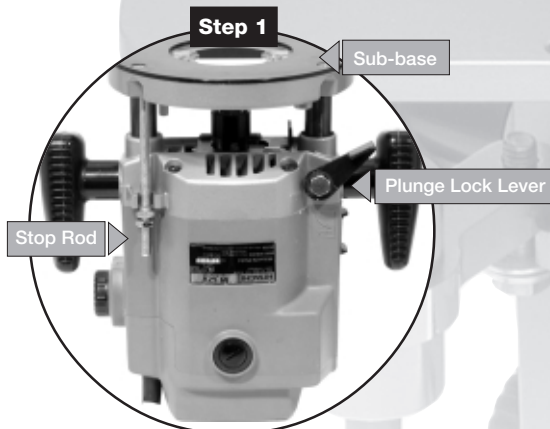


The Woodpecker PlungeLift™ Installation Instructions



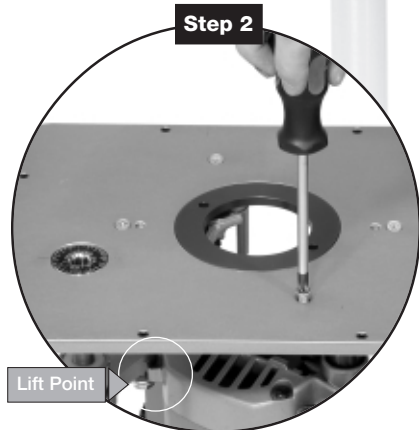
Note: Installation requires removal of some router components. This may effect the manufacturers original warranty. Check with the manufacturer for details.



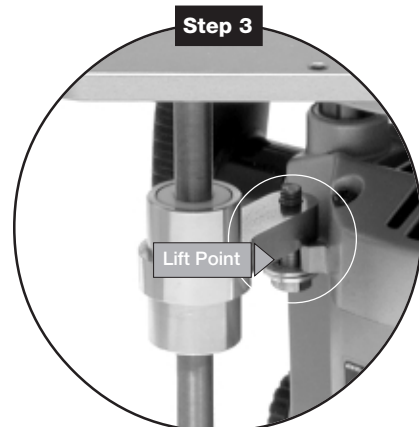
Step 1 Before removing stop rod, set base to router distance of about 1 1/2" as measured at the column. Fully close plunge lock lever.

(Failure to lock the plunge mechanism will result in the base ejecting from the motor when the stop rod is removed.)

Remove threaded stop rod from base. Then remove plastic sub-base from router.



Step 2 Using four screws provided, attach aluminum plate to the router. Orient router to plate as shown. The lift screw needs to be near the lift point on the router.



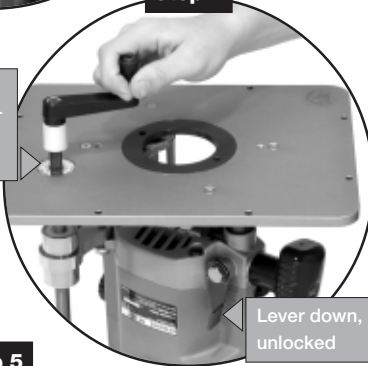
Step 3 Then, using the bolt and both washers, attach the support arm to the lift point on the router as shown. The lift point is the "U" shaped cutout that the stop rod previously ran through.

The Woodpecker PlungeLift™ Installation Instructions *cont.*



Step 4

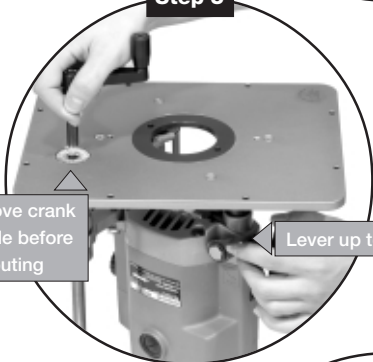
Clockwise to raise, counter-clockwise to lower



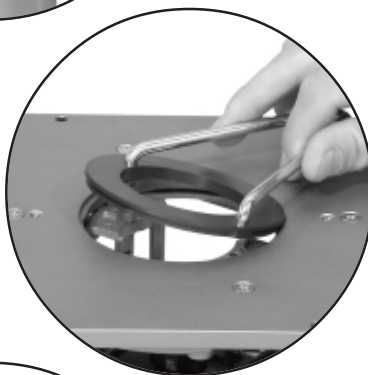
Lever down, unlocked

Step 5

Remove crank handle before routing



Lever up to lock



Alternate Position

Note: Make sure thumb wheel operated depth stop adjustment stem, is adjusted completely away from stop screws.

Step 4 With the plunge lock lever in the unlocked position, rotate the crank handle clockwise to test for free motion. More resistance in the clockwise direction is normal due to the plunge springs in your router (do not remove the springs). If too much resistance is experienced;

1. Re-engage the plunge lock lever.
2. Loosen the support arm attachment bolt.
3. Rotate crank lever counter-clockwise until support arm is just free of contact with lift point.
4. Re-tighten attachment bolt.
5. Release the plunge lock lever (down).
6. Repeat rotation of crank handle to see if ease of height adjustment has improved.
7. Repeat procedure as necessary.

Step 5 Always make sure plunge lock lever is in the locked position and crank handle is removed before attempting any routing operations.

Changing Rings. Three different rings are included with your PlungeLift. A 1" I.D., 1 3/16" I.D. and a 2 1/2" I.D., (shown). These rings can be removed or installed with the spanner wrench. Engage two short legs of wrench into two small holes in ring. Rotate ring **CLOCKWISE** and lift to remove. To install ring, set ring into recess until it is flush with top of plate and rotate **COUNTER-CLOCKWISE** to lock into position.

Starting Pin. Your PlungeLift also comes with one starting pin. This pin is used when performing edge-forming operations. It is designed to add an element of control when starting cuts. The starting pin can be used in two different positions. Make sure starting pin is firmly tightened before using.

