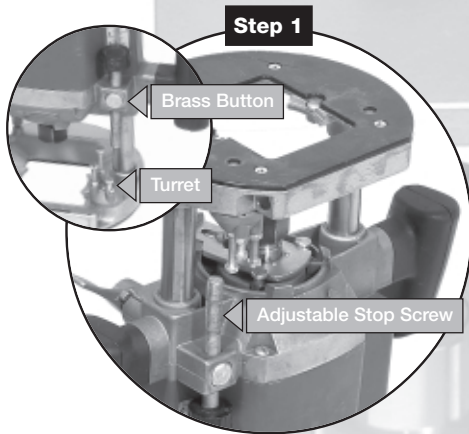


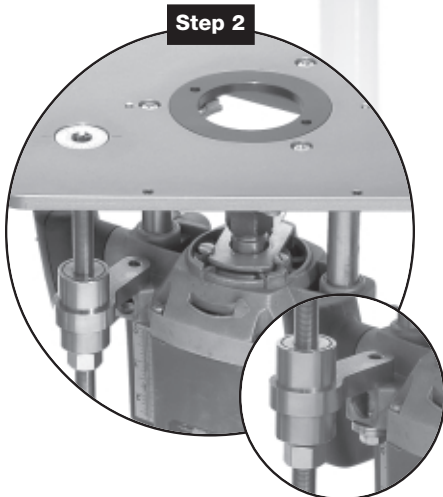
The Woodpecker PlungeLift™ Installation Instructions



Note: Installation requires removal of some router components. This may affect the manufacturer's original warranty. Check with the manufacturer for details.

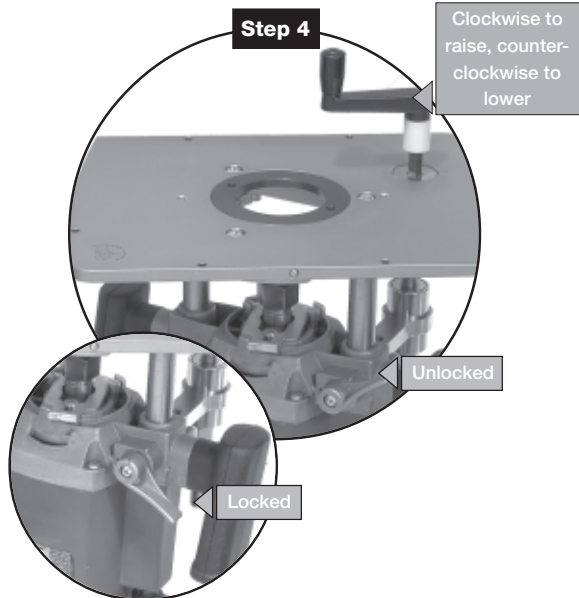


Step 1 Begin by removing adjustable stop screw. Press in metal button, pull out screw, and remove button and spring. Next, remove three adjustable turret screws and nuts. Finally, remove black sub-base and four screws. Save all items for possible future use.



Step 2 Using the three screws provided, secure aluminum base plate to router. With plunge mechanism locked, use crank handle to adjust support arm so that it is just touching the attachment point. Secure support arm with the hex bolt, lock washer and both flat washers as shown.

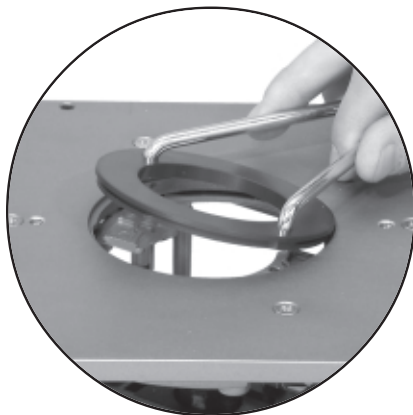
The Woodpecker PlungeLift™ Installation Instructions *cont.*



Step 3 With the plunge lock lever in the unlocked position, rotate the crank handle clockwise to test for free motion. More resistance in the clockwise direction is normal due to the plunge springs in your router (do not remove the springs). If too much resistance is experienced;

1. Re-engage the plunge lock lever.
2. Loosen the support arm attachment bolt.
3. Rotate crank lever counter-clockwise until support arm is just free of contact with attachment point.
4. Re-tighten attachment bolt.
5. Release the plunge lock lever.
6. Repeat rotation of crank handle to see if ease of height adjustment has improved.
7. Repeat procedure as necessary.

Always make sure plunge lever is locked and remove crank handle before attempting any routing operations.



Changing Rings. Three different rings are included with your PlungeLift. A 1" I.D., 1 3/16" I.D. and a 2 1/2" I.D., (shown). These rings can be removed or installed with the spanner wrench. Engage two short legs of wrench into two small holes in ring. Rotate ring **CLOCKWISE** and lift to remove. To install ring, set ring into recess until it is flush with top of plate and rotate **COUNTER-CLOCKWISE** to lock into position.



Starting Pin. Your PlungeLift also comes with one starting pin. This pin is used when performing edge-forming operations. It is designed to add an element of control when starting cuts. The starting pin can be used in two different positions. Make sure starting pin is firmly tightened before using.

