

# The Woodpecker PlungeLift™ Installation Instructions

*Note: Installation requires removal of some router components. This may affect the manufacturer's original warranty. Check with the manufacturer for details.*

## Step 1



**Step 1** Remove clear plastic shroud and depth stop rod. Rotate handle to unlock plunge mechanism. (Save all parts for future use).

## Step 2



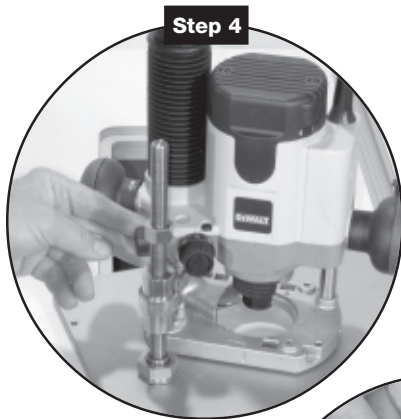
**Step 2** Using two included 6MM metric screws, attach router to plate. (Do not remove thin phenolic sub-base from the router).

## Step 3



**Step 3** Align the engagement pin with the depth stop rod hole location in router. The flat on the pin should face away from the thumbscrew.

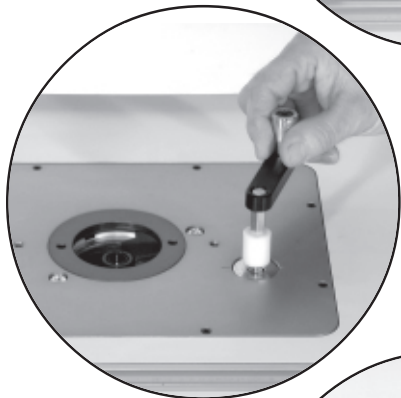
# The Woodpecker PlungeLift™ Installation Instructions *cont.*



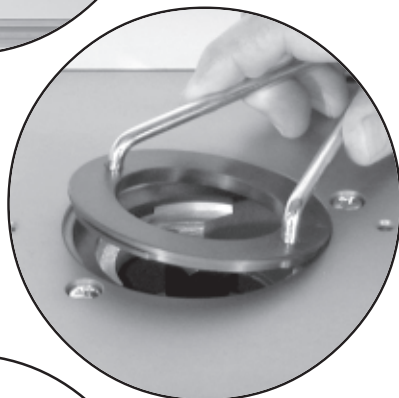
**Step 4** Carefully depress router to engage pin. When fully bottomed out, tighten thumbscrew.



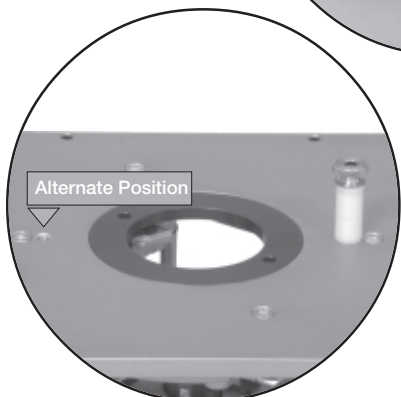
**Step 5** Install in your router table and you're ready to use it.



**Adjusting Height:** Turn off and unplug router. Rotate locking handle to release plunge mechanism on router. Insert and rotate crank handle clockwise to raise bit, counter-clockwise to lower it. Remove crank handle and re-lock plunge mechanism before turning on or using your router. (Note: A longer, 8" crank handle is available to clear taller router fences.)



**Changing Rings:** Your PlungeLift comes with three rings; a 1" I.D., 1 3/16" I.D. and a 2 1/2" I.D. ring. You can remove rings with the spanner wrench by rotating them clockwise, or install them by rotating them counterclockwise.



**Starting Pin:** A threaded starting pin is also included. Use this starting pin to rest your work piece against when starting routing cuts. It provides a point of leverage. A second starting pin is also optionally available.

